

THE ART OF PRECISION

EMB DIE-CUTTING MACHINES
THE EMBODIMENT OF POWER AND PERFECTION

- High speed up to 500 strokes/min
- Economical long-life die-cutting tools
- Quick and flexible format changing
- Diverse equipment for all kinds of decorations and functions
- Later upgrade possible



EMMENDINGER
MASCHINENBAU

www.emmendinger.de



die -cutting machines

Emmendinger Maschinenbau GmbH

Am Elzdamm 32 ■ D-79312 Emmendingen

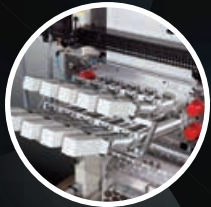
Fon: +49 7641 92 42-0 ■ info@emmendinger.de

HIGH-SPEED DIE-CUTTING AND EMBOSsing MACHINE

By means of the high-speed die-cutting and embossing machine, unprinted or printed aluminium or plastic foils or even paper can be unwound and cut into smaller shapes. These shapes can be found as covers, sealing lids, lids, labels, in-mould labels, ice cream cones

or bottle neck labels mainly in the packaging-, food- and beverage industry, and according to their specific application, they can mainly be embossed, perforated, formed, domed or pre-formed. We endeavour to support the competitiveness of our customers by a maximum of

quality, efficiency and creative solutions. Depending on your shapes, foil widths and materials we will be pleased to develop individual proposals for solutions.



*Aluminium yoghurt lid, 53 mm – 10 cavities, aluminium 40 micron, embossed 120 micron
Special magazine to cut directly into boxes for packaging*



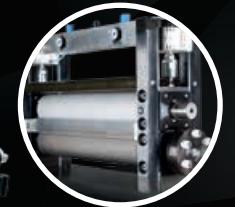
*EMBosser
Edge embossing and placed embossing*



*EMBedded inspection
Printed image control and foil inspection*



Labels for beer bottle necks, 150 x 140 mm – 4 cavities, aluminium 12 micron, perforated and embossed 110 micron



Interchangeable cassette for different types of embossing or perforation



Integrated shredder for waste foil removal

**INNOVATIVE.
FLEXIBLE.
ECONOMICAL.**

**SUPERIOR TECHNOLOGY,
IMPORTANT
SERIALEQUIPMENT**

- **High machine speed up to 450 strokes/min.**
- **Individual processing widths**
DS-520 processing width 300 - 520 mm
DS-600 processing width 300 - 600 mm
- **Reel diameter up to 1.000 mm**
- **State-of-the-art control technology** with servo-control-led AC-motors, cam-controller, touch-panel, plain text in national language, air-conditioned switch cabinet.

- **Latest IT-technology** for communication, diagnosis, service and recording of production and operator data via internet
- **Quick tool changing** via adaption plates for different types of tools
- **Modular system for interchangeable cassettes** with different types of embossing or perforation
- **Extension possibilities for additional modules**